

CDOT Using Curb Ramp Cells

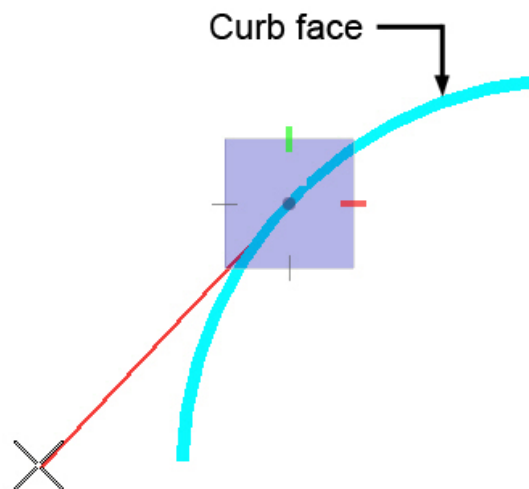
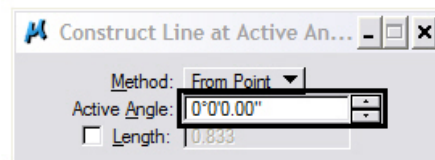


This document guides you through the use of the pedestrian curb ramp cells. These are dynamic cells that can be modified “on the fly” using predefined parameter sets and user input.

Preparation

The pedestrian curb ramp cells are designed to be placed at a 90° angle to the curb. The steps below describe the method used to set the Active Angle for the ramp.

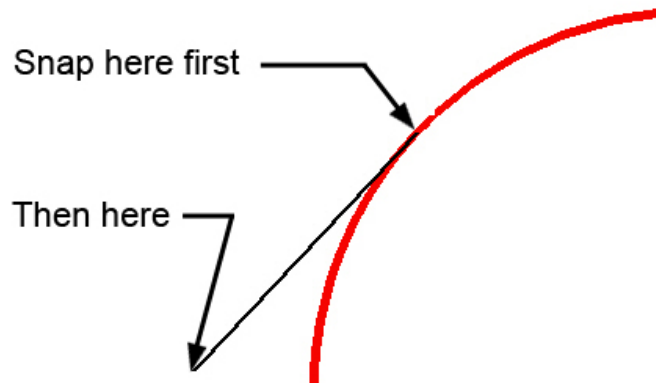
1. Zoom in around the area on the curb where the ramp is to go. Select the **Construct Line At Active Angle** command from the **Linear Elements** toolbar.
2. Set the **Active Angle** to 0° .
3. <D> on the curb face where the center of the ramp is to be located and extend the line in a direction tangent to the back of the ramp at the center.



4. In the **MicroStation Key-In** window, type **active angle pt2** and press the Enter key. This is used to set the active angle to that of the line that was just drawn.

CDOT Using Curb Ramp Cells.pdf

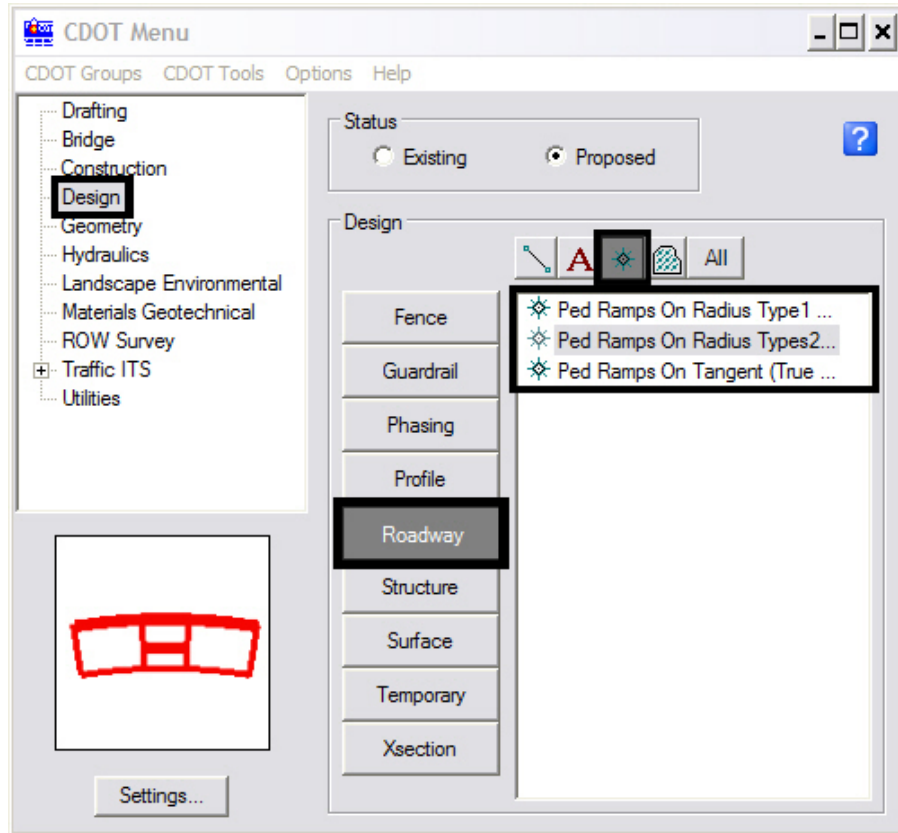
5. <T> to the end of the line on the curb face and <D>. Then, <T> to the other end of the line and <D>. The Active angle is now set to the angle of the line.



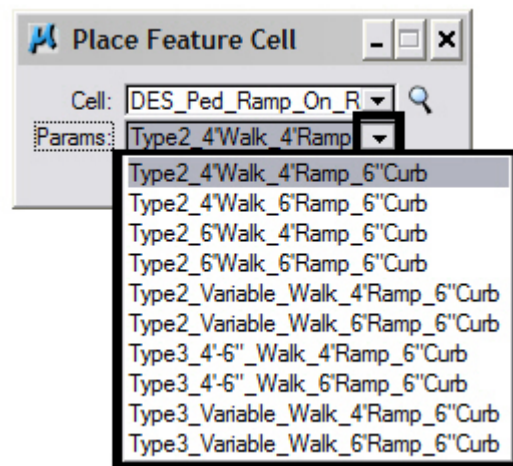
Placing A pedestrian Curb Ramp Cell

1. <D> Design from the CDOT Menu explorer.
2. <D> the Roadway category
3. <D> the Cell filter.
4. <D> the desired pedestrian curb ramp cell from the list.

CDOT Using Curb Ramp Cells.pdf



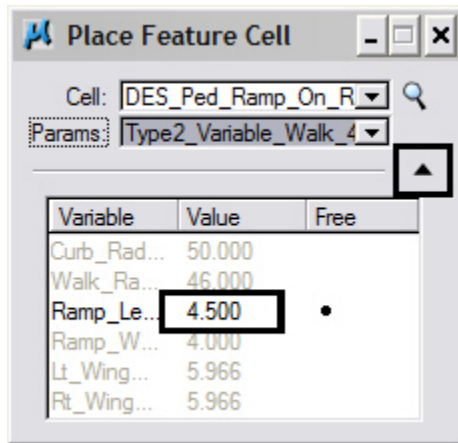
5. Select the desired parameter set from the Params drop-down list.



6. Some parameter sets have options for user defined values for some variables. These will typically have “variable” in the name. To modify a variable, select the expand icon in the lower right corner of the tool settings box.

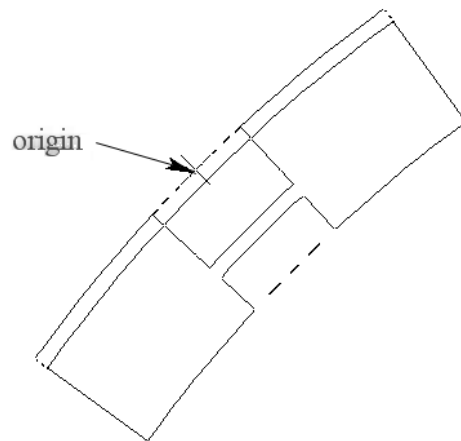
CDOT Using Curb Ramp Cells.pdf

7. In the list, locate the variable to be changed (grayed out settings can not be changed). Highlight the desired variable then right click in the **Value** field and key in the desired number. Press the **Enter** key to accept the key in.

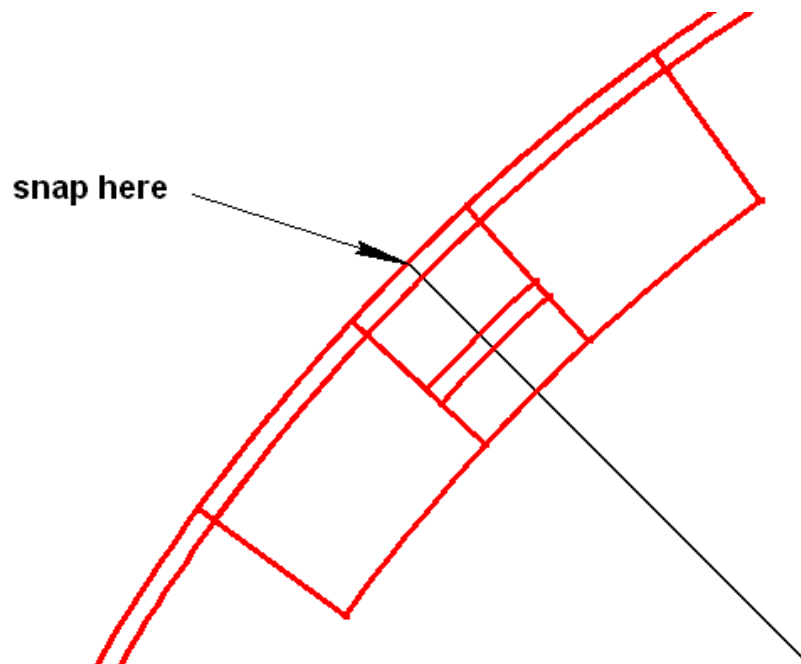


CDOT Using Curb Ramp Cells.pdf

8. The cell is now ready for placement. The origin of the cell is at the curb face in the center of the ramp.



9. Follow the steps above to select a cell. Once the cell is selected and set up (if it has an undefined variable), <T> to the line at the curb face and <D> to place the cell.



CDOT Using Curb Ramp Cells.pdf

10. Finally, delete the construction line.

